



**ONE MONTH
FREE RENT**



**DEPOSIT FREE
OPTIONS AVAILABLE**

Portland Fields, Sutton In Ashfield, NG17

£1,185 PCM

* Rent Free - Limited Time Offer*

Location, Travel & Local Community

Welcome to Portland Fields Sutton In Ashfield - a charming semi-detached house that could be your next dream home!

Situated in a peaceful neighbourhood, this house offers a tranquil retreat from the hustle and bustle of everyday life.

Education & SCHOOLS NEARBY

The area provides excellent opportunities for children aged 4-18, with a range of schools ranging from Kindergartens all the way up to Primary schools all within 1.5 miles of the site. Making the school run quick and easy.

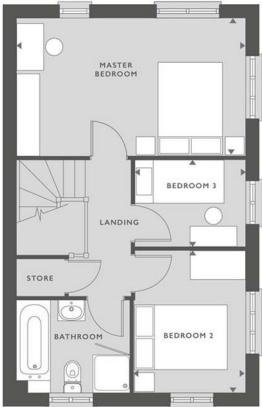
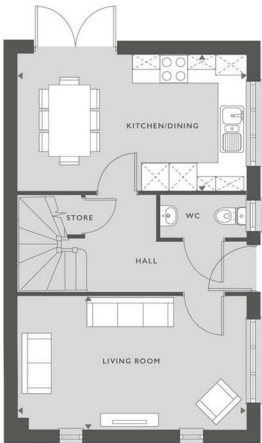
About Your Home - THE GRANTHAM

Presenting The Grantham, a remarkable double-fronted home that seamlessly combines timeless architectural charm with modern living. Upon entering, you'll be welcomed by a warm and inviting entrance hallway, complete with a convenient ground-floor W/C and a storage closet under the stairs to meet your storage needs.



37 Rothwell Close, Sutton-In-Ashfield, NG17 1DL

THE GRANTHAM
THREE BEDROOM HOME
850 SQFT
79.0 M²



GROUND FLOOR

KITCHEN/DINING	4.89M X 2.95M	16' X 9'8"
LIVING ROOM	4.89M X 2.84M	16' X 9'4"

FIRST FLOOR

MASTER BEDROOM	4.89M X 2.95M	16' X 9'8"
BEDROOM 2	2.99M X 2.37M	9'9" X 7'9"
BEDROOM 3	2.37M X 1.87M	7'9" X 6'1"



SVP

